

# 2011 Wisdom Gathering

*a journey into the* **LAW OF NOW**



*Sunrise Springs in Santa Fe*

*September 26-28*



**TWO WORLDS**  
WISDOM SCHOOL

# Worlds within Worlds

*journey into the* **LAW OF NOW**



*Law of Now by Belinda Paton*

Nothing is so fundamental as your concept of time. Yet its mastery is rarely taught. This year we invite you to become a traveler in time—to alter both the past and the future in the *eternal now*.

One way to think about time and space is as reality bubbles. Each bubble has its own laws and principles, its distinct opportunities and limitations. A bubble is a complete world—or a world within a world. When you enter a bubble, it appears as all that exists. But with expanded awareness, you discover other times and spaces.

The Law of Now permits you to move out of limiting conditions and enter other worlds.

# monday SEPTEMBER 26

**8:00 AM** *on the* **BLUE HERON DECK**  
**BREAKFAST**

**8:45 AM** *in the* **SAGES ART CENTER**  
**ENTER TO THE SOUND OF DRUM**  
*Ibrahimasory Fofana (Soriba)*

**9:00 AM** *in the* **SAGES ART CENTER**  
**WELCOME AND GUEST INTRODUCTIONS**  
*Kevin Kaiser, Leanne Kaiser Carlson*

**9:20 AM** *in the* **SAGES ART CENTER**  
**13 WORLDS OF TIME**  
*Lee Kaiser*

**10:00 AM BREAK**

**10:20 AM** *in the* **SAGES ART CENTER**  
**ONCE UPON A TIME**  
*Lee Kaiser, Kevin Kaiser, Leanne Kaiser Carlson,  
Ibrahimasory Fofana (Soriba), Kirsten Olson*

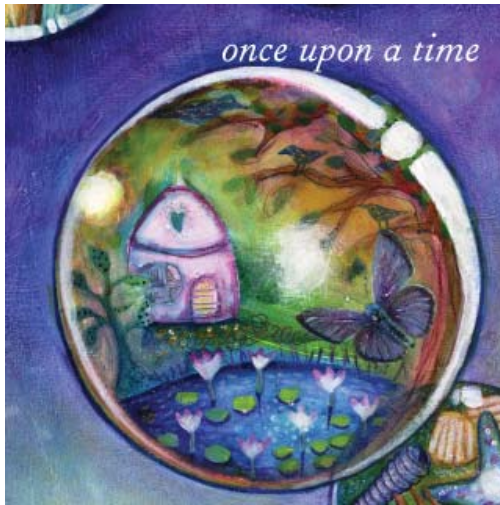
**12:30 PM LUNCH** *on the* **BLUE HERON DECK**

**1:45 PM** *in the* **SAGES ART CENTER**  
**REST AND RENEWAL**  
*Wayne Muller*

**4:30 PM OPEN TIME** *on the* **GROUNDS**

**5:30 PM DINNER** *on the* **BLUE HERON DECK**

**7:00 PM** *in the* **ATRIUM**  
**STORYDANCE**  
*Zuleikha*



## ONCE *upon a* TIME

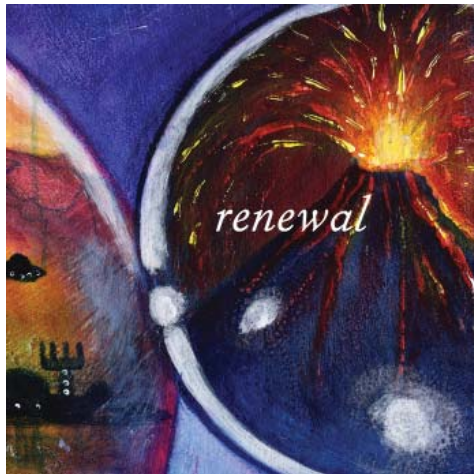
When *your* story resonates with a *once upon a time* story, it releases power in the now. The field of energies and ideas created over time flows into the present. You become a tributary on a river that may have been built for thousands of years. Although the modern world has sophisticated forms not present in earlier times, the mythic world has power that extends through time.

### *why it matters*

Stories help us interpret events that otherwise appear random. And at the highest level, they constellate events—they set up an attractive field that draws in elements consistent with the story. People and organizations with powerful mythologies are more able to architect themselves through time.

## *cycles of* RENEWAL

Everything requires renewal at some point in time. The original energy that created it runs out, and the form becomes exhausted—it moves into decline or stasis. Disruption initiates a new cycle of formation. It precipitates a dramatic reorganization, much like a volcano creates new land and recycles the elements of the earth.



### *why it matters*

Unless you are intentional about renewal, your life is likely to peak around age 20 or 30. If you keep doing what you have always done, you may get better at it, but you will eventually exhaust the initial charge and move into descent. Many people and organizations do not recognize when they have worn out old spaces or know how to initiate planned disruption and renewal.

## *rhythms of* REST

There are two primary rhythms in the universe—activity and rest. One is a cycle of going out, creating, and expressing. The other is a cycle of coming in, replenishing, and receiving. If one cycle predominates to the detriment of the other, it creates imbalance. Sustained concentrated effort produces supersaturation and leads to exhaustion and alienation. Too much time in a rest cycle creates loss of perceptual edge and leads to dullness and stasis.

### *why it matters*

Our society tends toward imbalance in the time cycle of activity. As a consequence, everything in the environment encourages you to push too hard. This means the awareness of the time to rest must arise internally. Creators optimize cycles of activity and rest.



*wisdom elder*

## WAYNE MULLER

This year our wisdom elder and special guest is Wayne Muller. We have admired his work for many years, and our focus on the Law of Now created the perfect opportunity to invite him to join us.

A graduate of Harvard Divinity School, Wayne works with community organizations, educational institutions, and healthcare systems. He is the founder of Bread for the Journey—a network of ordinary people engaged in neighborhood philanthropy through micro-grants. He has served as Senior Scholar at the Fetzer Institute, is an Extended Faculty at the Institute of Noetic Sciences, and has received numerous awards for his work with those in need.

Among the many books Wayne has authored, are *Sabbath: Finding Rest, Renewal and Delight in our Busy Lives* and *A Life of Being, Having and Doing Enough*. He offers beautiful insights on how to live well in the moment.

When we talked with Wayne earlier this year about joining us for the Wisdom Gathering, it was clear that he has great resonance with the Two Worlds community—we are thrilled he is joining us!



# *tuesday* SEPTEMBER 27

**7:00 AM** *on the* **BLUE HERON DECK**  
**BREAKFAST**

**8:00 AM** *meet at* **FRONT CIRCLE DRIVE**  
**DEPART FOR TENT ROCKS**  
*Participants and Faculty*

**12:30 PM LUNCH** *on the* **BLUE HERON DECK**

**1:30 PM** *in the* **SAGES ART CENTER**  
**OTHER TIMES OTHER PLACES**  
*All Faculty*

**3:00 PM BREAK**

**3:15 PM** *in the* **ATRIUM**  
**TINY WORLDS**  
*All Faculty*

**5:00 PM OPEN TIME** *on the* **GROUNDS**

**5:30 PM DINNER** *on the* **BLUE HERON DECK**

**6:45 PM** *on the* **MULBERRY LAWN**  
**DANCING AT DUSK**  
*Angie Gollat, Sarah Entrup*

**8:00 PM** *in the* **HEALING GARDENS**  
**STARGAZING**  
*Scott Hendrickson*

**8:00 PM** *in the* **CLOUD STUDIO**  
**NEW MOON CRYSTAL GRID MEDITATION**  
*Eileen Zorn, Julie Smith, Carol Connor, Deborah Koff-Chapin, Bonnie Harrow*

## TIME *keepers*

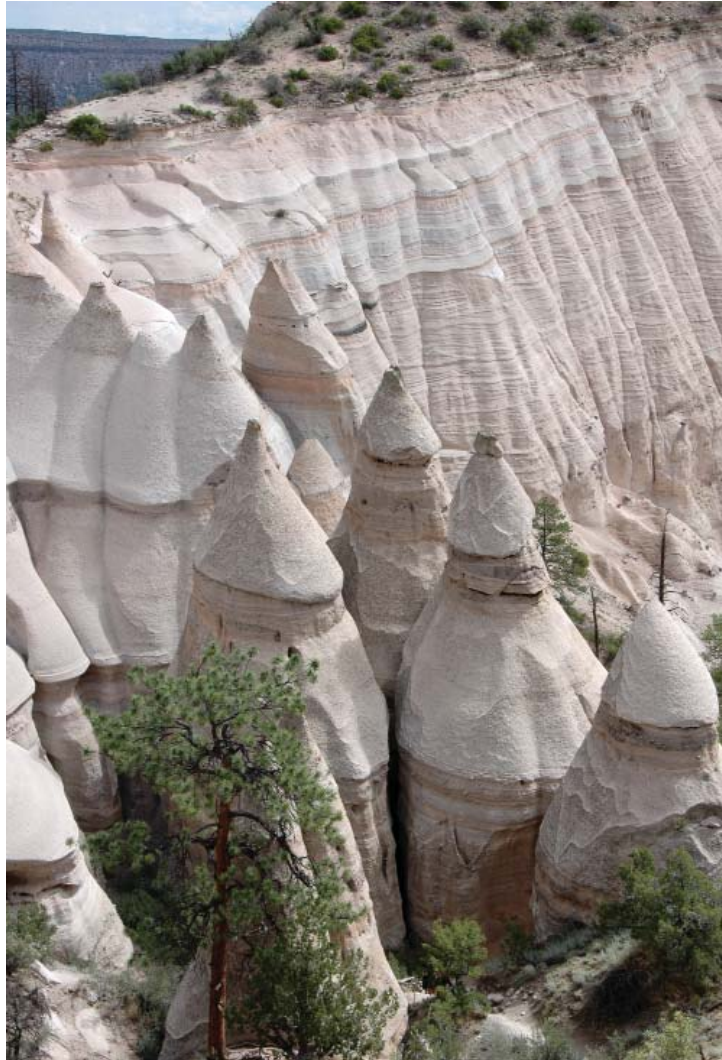
All life forms have a different method for recording the passage of time. Trees grow rings, land forms sedimentary layers, oceans contain cetaceans such as dolphins that carry a memory effect. These records can be read to release the story of what has gone before. An ice core, for example, reveals what happened to the air, land, and plants in distant times. The oldest records on the planet exist in the mineral kingdom.



### *why it matters*

Often we see things as snapshots in time—disconnected from what they have been in the past or what they will be in the future. But both people and organizations can learn to enfold time. Organizations can continue to source power from the taproot of their founders while progressing into higher forms.

*field trip to* TENT ROCKS



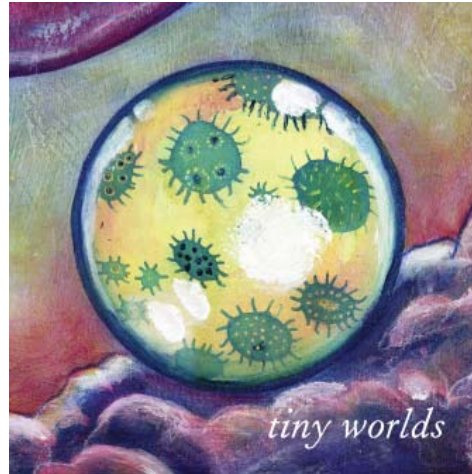


## *other* TIMES *other* PLACES

Most people live in a bubble in time and space—one reality among many alternatives. But within any world, and on other worlds, are realities that are completely different. Each reality contains a developmental potential. When you reach this potential, there is nothing more to achieve without moving to a different habitat.

### *why it matters*

You can be a failure in one space and a success in another. If you are not well fitted to your time and place, your life will be a struggle. And if you are aware of only one time and space, you do not know that other things are possible. The hero's journey is a crossing into other times and places.



## TINY *worlds*

There are worlds within worlds within worlds. Each has its own quality of time and space—its own rules and scale. Each world is related to one smaller and one larger. If you were to project your consciousness into a cell of your body, you would discover a world nothing like the one you normally occupy. But it is equally real. At your normal scale, you are a cell in a much larger being.

### *why it matters*

You can always move into a world with a different set of constraints and possibilities. Most people assume the world they occupy is the only world. But at some point in your development, you push out into a bigger space with greater perspective.

*storydance with* ZULEIKHA



*wednesday* **SEPTEMBER 28**

**6:45 AM**  
**GREET THE SUN**  
*Sarah Entrup*

*in the* **HEALING GARDENS**

**8:00 AM**  
**BREAKFAST**

*on the* **BLUE HERON DECK**

**8:45 AM**  
**THE ETERNAL CITY**  
*Lee Kaiser, Julie Smith*

*in the* **SAGES ART CENTER**

**9:45 AM BREAK**

**10:00 AM**  
**WORLDS OF ENERGY AND HEALING TEAS**  
*Sarah Entrup, Luke Entrup,  
Carol Connor, Mary Beth Davis*

*on the* **GROUNDS**

**11:00 AM**  
**MANY EPOCHS**  
*Lee Kaiser, Leanne Kaiser Carlson, Kevin Kaiser,  
Wayne Muller, Tanya Gerard and Rob Thomas*

*on the* **GROUNDS**

**12:30 PM ADJOURN AND LUNCH**

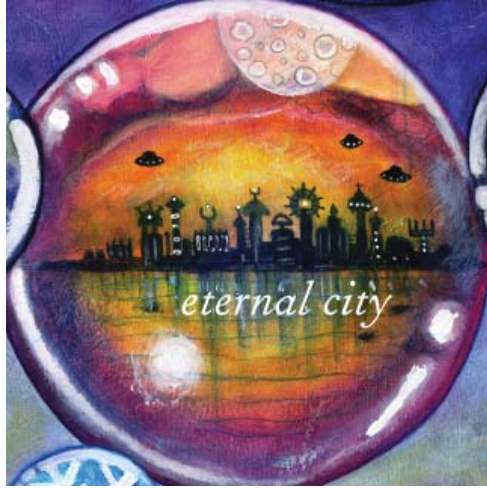


## ALPHA *and* OMEGA

Cosmic time is different than planetary time, which is different than personal time. Cosmic cycles of creation are immense in length compared to planetary cycles. Personal cycles are even shorter. Yet in the eternal now, we occupy all three times.

### *why it matters*

Your behavior changes depending on how much space and time you occupy. People who make decisions based on the impact seven generations later, for example, are thinking in planetary time rather than personal time. Your time awareness relates to the scope of your work. As you evolve, you move toward a more expanded perspective and your activities change from the trivial to the strategic.



## *the* ETERNAL *city*

Over time, societies move toward more sophisticated urban settings. They progress toward forms that are more beautiful, renewing, and elegant. *City* is the ideal toward which all civilizations move—epitomized in future time as the holy city, the eternal city, mecca, and islands of light. Advanced cities optimize highly-concentrated urban spaces and natural areas.

### *why it matters*

Many cities evolve without much thought—they are not designed. Consequently the seeds of destruction are planted at the beginning. A large portion of disease in a population can be designed out if habitats are created to generate health.

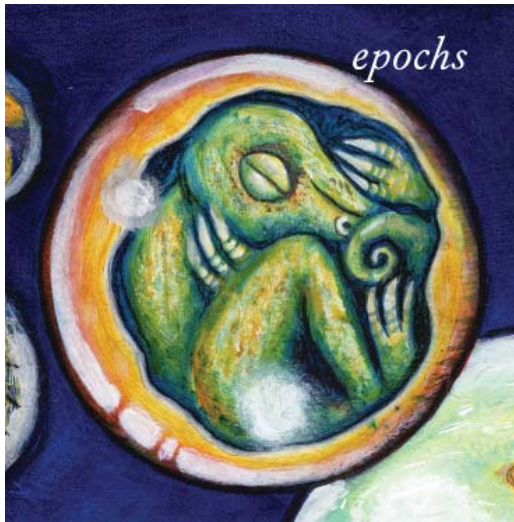


## *power of* PRESENCE

As we more fully occupy any instant, we become more aware of its possibilities. Presence is both the awareness of everything that is trying to happen and the understanding of our role in its unfolding. It offers us one of the most beautiful universal paradoxes—that by showing up fully in any *one* place in any *one* time, we simultaneously occupy more of *every* place in *every* time.

### *why it matters*

Attachments to either the past or the future pull us out of the *now* and limit our ability to fully come into relationship with the people and possibilities surrounding us. When we only partially show up, we miss out on much of the world, and much of the world misses out on us.



## *many* EPOCHS

An epoch is a developmental stage in time. Planets and societies move through epochs in much the same way as individuals move through stages of maturity. Epochs are characterized by the prevailing technology and consciousness. Early stages are about survival—life just fights to establish itself. Later stages are about enhancement and expansion.

### *why it matters*

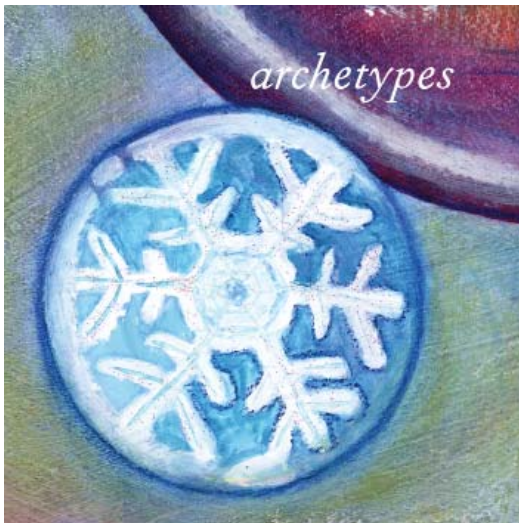
If you understand your current epoch, you have a tremendous advantage. It is easier to see the trajectory along which things are moving and guide their natural unfoldment. Both individuals and organizations should ask, “What is my next stage of development, and how can I begin this next chapter?”

TEA HOUSE *at sunrise springs*



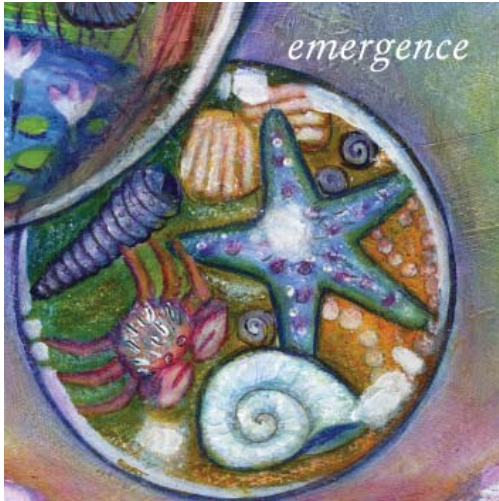
## *realm of* ARCHETYPES

An archetype is a pattern in Source—it is preexistent and out of time. Contained in every archetype is the urge to become. Creation provides the opportunity for the archetype to become *in time* what it already is *out of time*. Said more simply, Source provides the idea, and we provide the field of manifestation.



### *why it matters*

Archetypes help us understand more about what anything is like in its more perfect form. This understanding allows us to design the conditions that accelerate its evolution in matter.



## EMERGENCE *through time*

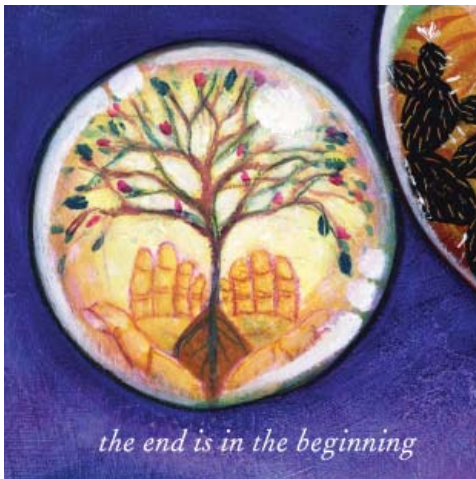
When you are out of time, every design is complete—there are no stages, no unfolding, no evolving. The beginning and the end are the same in the *eternal now*. Once a thing enters manifestation, the pattern appears in successive stages. Emergence is this unfolding through time.

### *why it matters*

All things are trying to move to their next higher form. There is a push toward more complexity and more awareness. If you tune to this progression, you can help a thing along its path of emergence.

## THE END *is in the* BEGINNING

The end is always in the beginning. When you create something, a part of it exists outside time. This timeless part carries the elements of intention, thought, and emotion. These continue to guide what develops in third-dimensional reality. For this reason the seeds of destruction or success are sown very early, and things become more like themselves over time.



### *why it matters*

Often we don't pay enough attention to how things begin because beginning points seem small and insignificant compared to what will later develop. But it is important to give things a good birth and initial formation. The tree is in the seed.

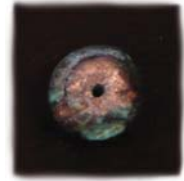
# GUIDE TO BEADS



*Turquoise*  
Attendees of the  
Two Worlds Wisdom Gathering



*Turquoise*  
Two Worlds Faculty



*Turquoise*  
Attendees of the  
Kaiser Institute Annual Gathering



*Clear Crystal*  
Graduates of the  
Program in Intuition



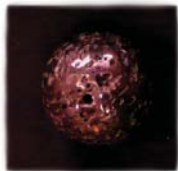
*Amethyst Crystal*  
Graduates of  
Advanced Intuition



*Coral*  
Graduates of the  
Program in Philanthropy



*Chrysocolla*  
Graduates of the  
Program in Integrative Medicine



*Lava*  
Voyagers to  
Other Worlds



*Fire Agate*  
Knights of the  
Healthcare Roundtable



*Amethyst*  
Graduates of the  
Alembic



*Opalite*  
Attendees of  
BLISS Retreats

[www.twoworldswisdom.org](http://www.twoworldswisdom.org)

*All rights for images in this document reserved. They may not be reproduced or transmitted in any form by any means without the written permission of Two Worlds Wisdom School.*



TWO WORLDS  
WISDOM SCHOOL